



System Backup & Restore Guide



Login Page

- 1 Enter <http://192.168.1.1/> into your browser whilst you are connected to your Vodafone Home Broadband.
- 2 The password to login is **vodafone**



Welcome

Enter your Vodafone Connect router password to manage your settings.

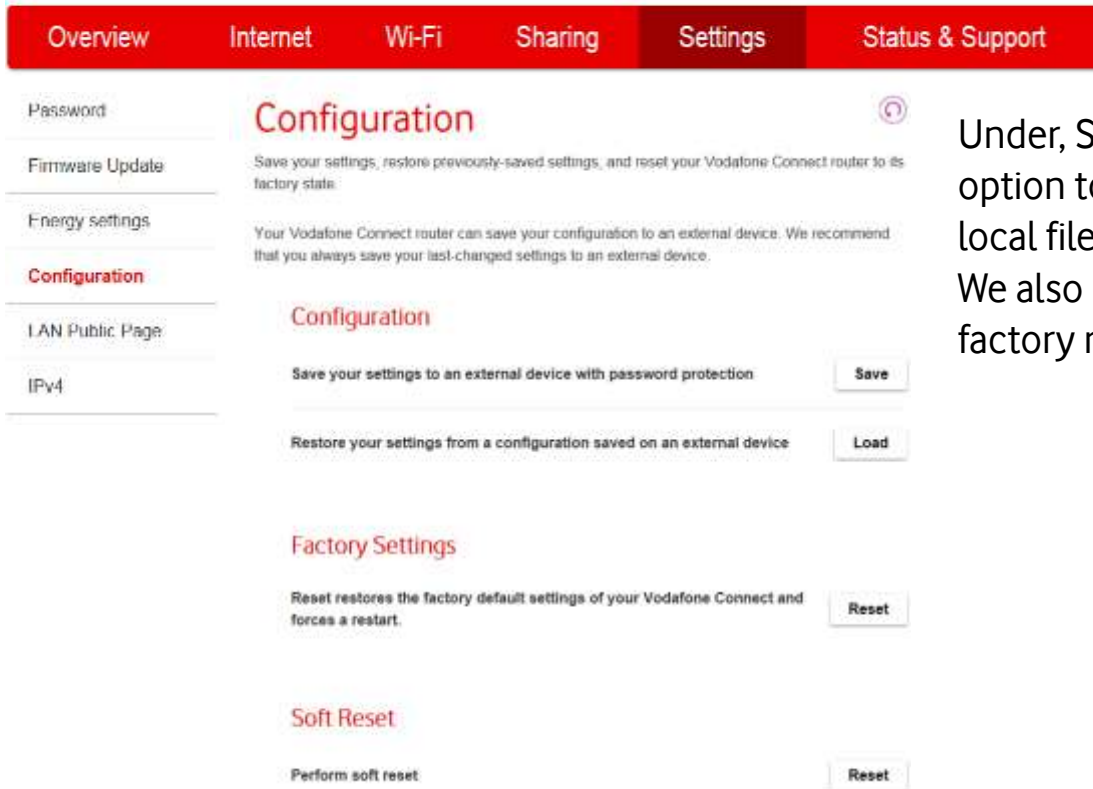
2

Log In

Forgotten password



System backup / restore



The screenshot shows the Vodafone Connect router settings interface. At the top, there is a red navigation bar with tabs for Overview, Internet, Wi-Fi, Sharing, Settings, and Status & Support. The 'Settings' tab is selected. On the left, a sidebar menu lists various settings categories: Password, Firmware Update, Energy settings, Configuration (highlighted in red), LAN Public Page, and IPv4. The main content area is titled 'Configuration' and includes a help icon. It contains three sections: 1. 'Configuration' with a description: 'Save your settings, restore previously-saved settings, and reset your Vodafone Connect router to its factory state.' Below this are two options: 'Save your settings to an external device with password protection' with a 'Save' button, and 'Restore your settings from a configuration saved on an external device' with a 'Load' button. 2. 'Factory Settings' with a description: 'Reset restores the factory default settings of your Vodafone Connect and forces a restart.' with a 'Reset' button. 3. 'Soft Reset' with a description: 'Perform soft reset' with a 'Reset' button.

Under, Settings > Configuration there is an option to save the routers existing settings to a local file on the connected PC/MAC at the time. We also have the ability to both soft reset and factory reset the router.



System backup / restore

Configuration

Save your settings to an external device with password protection

Save

Restore your settings from a configuration saved on an external device

Load

You can backup your existing router settings in case you need to factory reset the router or want to transfer these settings to a new box.

NOTE: If a fault is related to setting changes that have been made, then it may well follow if your file is restored elsewhere, so it's worth backing up then factory resetting but not restoring straight away.

Save configuration to an external device

Here, you can manage and see the details of your configuration settings.

Create a password to protect your data.

New password

Re-enter password

Password strength

Weak



Your password needs to contain at least 8 characters - including at least one lower or upper case letter, a number and a symbol

Save

Cancel



System backup / restore

Save configuration to an external device

Here, you can manage and see the details of your configuration settings.

Create a password to protect your data.

New password

Re-enter password

Password strength

Weak



Your password needs to contain at least 8 characters - including at least one lower or upper case letter, a number and a symbol

Save

Cancel

You will need to apply a description and password to the file before saving. Once that is complete, save the file to a chosen location. You can rename the file but it must be in a .ccf format.

Save configuration to an external device

Here, you can manage and see the details of your configuration settings.

Saved changes to:

Wi-Fi
IPv4
DNS

Create a password to protect your data.

New password

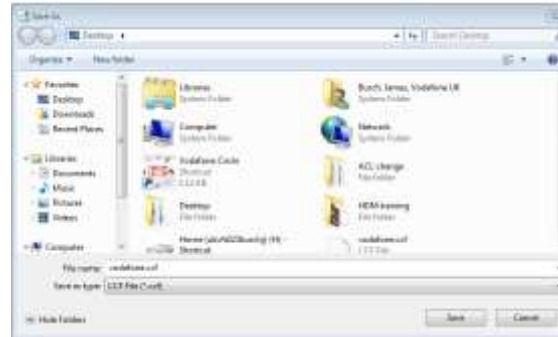
Re-enter password

Password strength

Good

Save

Cancel



System backup / restore

Restore your settings from a configuration saved on an external device

Load



Before you restore an old configuration, make sure you've saved your current settings

OK

Cancel

Please enter your password to load the configuration

This configuration file is password-protected. Please enter your assigned password.

Enter Password

Apply

Cancel

To restore the config file click load and locate the file, enter the password and then select the settings to restore.



System backup / restore

Load configuration from device

Created on: 14/06/2016 01:17:43

Firmware version: 5.4.8.1.271.1.42

Configuration description:

Saved changes to: Wi-Fi IPv4 DNS

Choose what settings you'd like to restore:

- Internet
- WiFi
- Sharing
- Settings
- Status & Support

Load Cancel



Configuration restoration in progress

Please don't turn off your Vodafone Connect router

Configuration restored successfully

Please press OK to continue

OK

Once you've chosen the settings to restore load the file and wait for completion.

NOTE: As mentioned before, if the fault is due to changed settings, then the fault will follow upon restoration.

